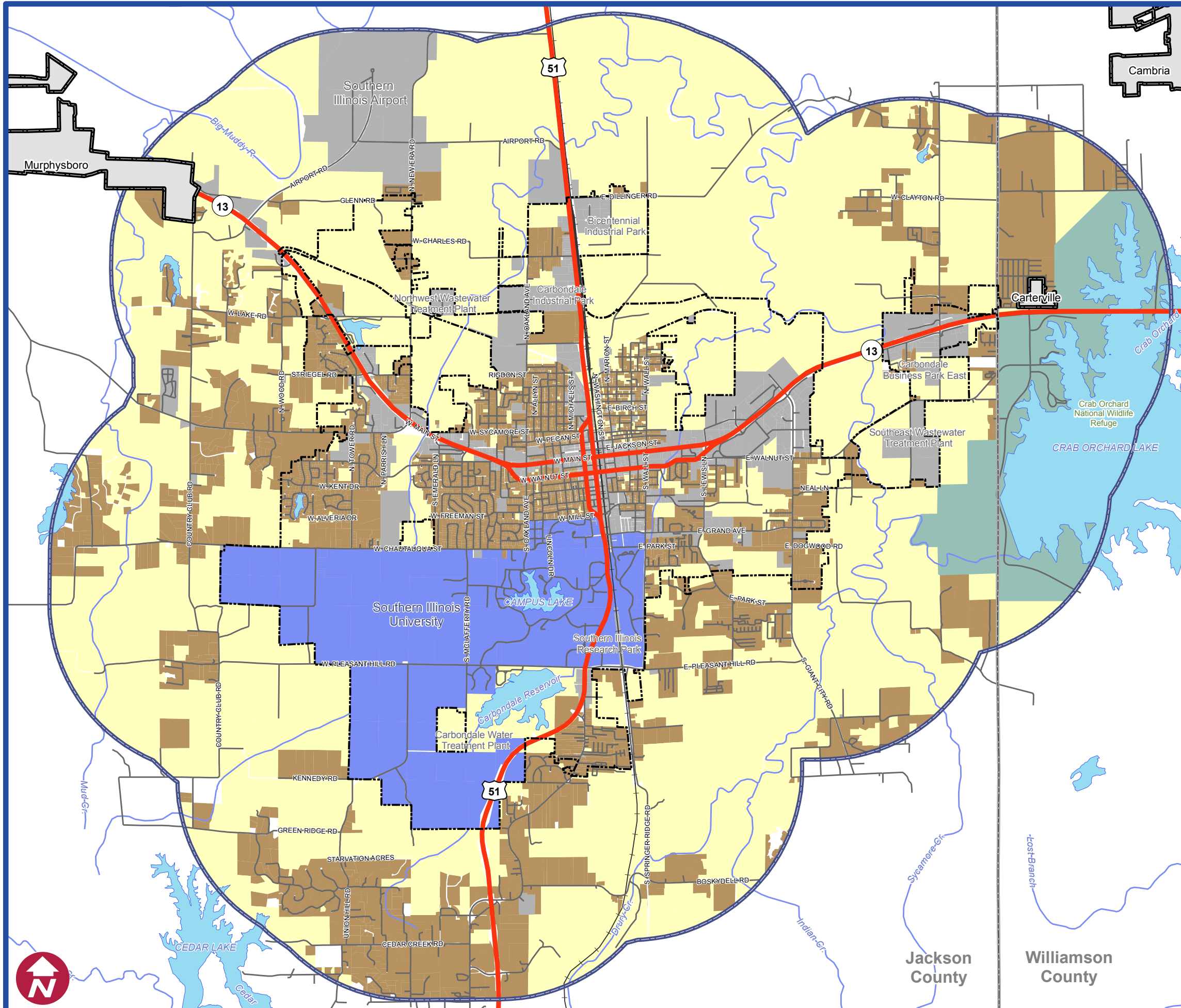


# 2.3 Growth Trends

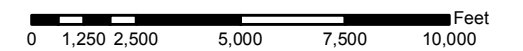


## Land Use

- Undeveloped
- Residential
- Non-Residential
- Crab Orchard Wildlife Refuge
- Southern Illinois University

## BOUNDARIES & INFRASTRUCTURE

- City Limits
- Study Area (1.5 mile)
- County Boundary
- Places
- Lakes
- Streams
- Railroad



Growth Trends