

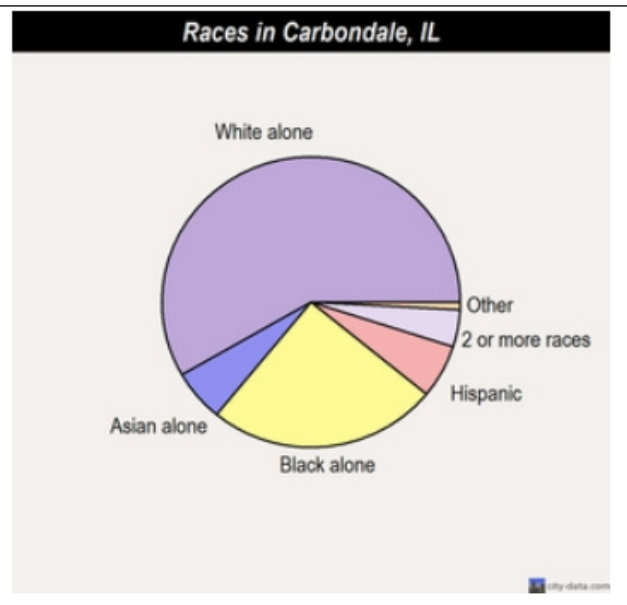
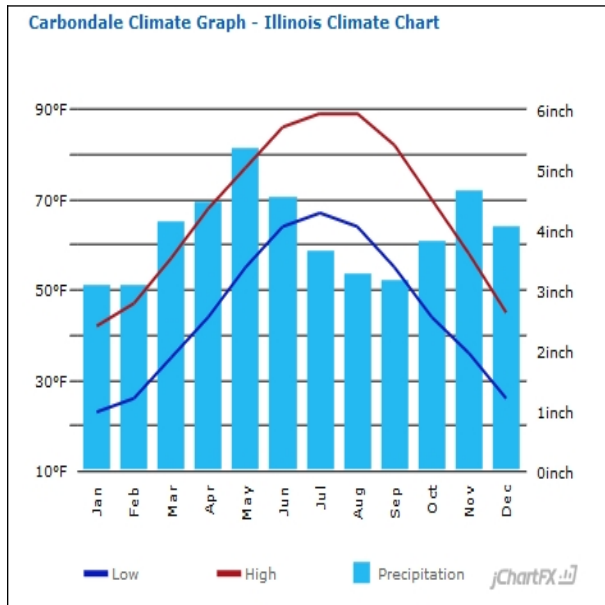
# CARBONDALE COMMUNITY PROFILE

Carbondale is the trade, tourism and educational center of Southern Illinois. Area transportation includes bus, rail and air. Bordered by a national forest, national wildlife refuge, state park and home of Southern Illinois University, the community serves as the host and focal point for many of the region's business and recreation activities.

*Platted November 27, 1852*  
*Incorporated August 23, 1873*  
**Council / Manager form of government**  
*Home Rule municipality*  
*Area in square miles 17.70*  
**Number of full time equivalent employees 260.58**

	Population			Races		
	City	County	State		City of Carbondale	State of Illinois
1970	22,816	55,008	11,110,285	White alone	58.6%	61.6%
1980	26,414	61,522	11,428,518	Black alone	24.1%	17.0%
1990	27,033	61,067	11,430,602	Hispanic	6.9%	14.0%
2000	20,681	59,612	12,419,293	Asian alone	6.1%	5.3%
2010	25,902	60,218	12,830,632	2 or more races	3.7%	1.8%
2017*	26,151	59,542	12,824,103			

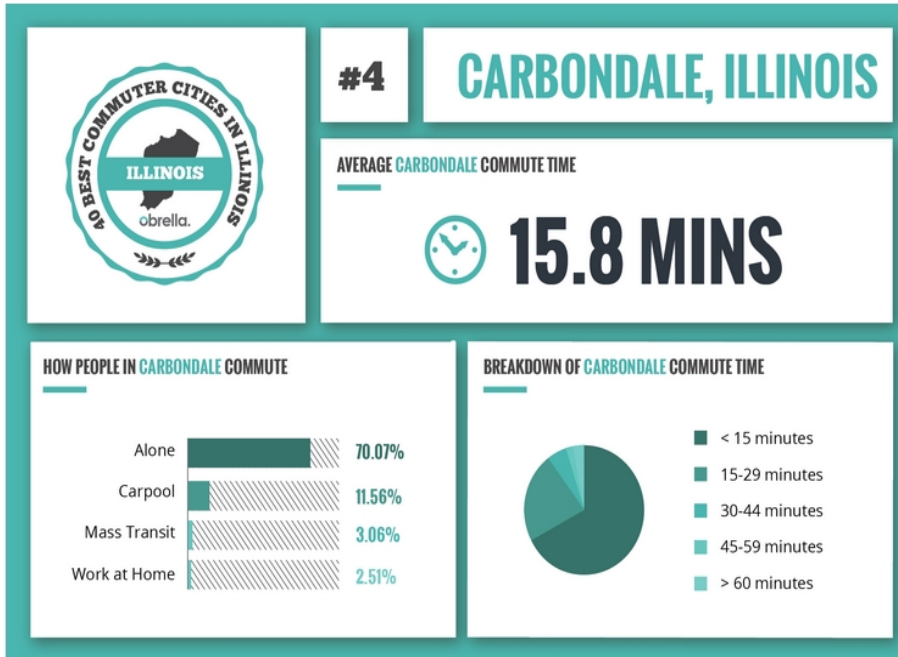
\* Census Bureau, USA.com, Neighborhoodscout.com



**The Jackson County-Murphysboro-Carbondale Enterprise Zone (EZ)** was a driving force for economic development during FY 2018, the enterprise zone ISSUED certificates for 8 projects with a total construction value of \$4,032,329.

**The Carbondale Small Business Development Center** at SIU: Last year (2017) advised 222 clients, provided 1,309 hours of consulting, held 8 business management training sessions, helped 28 entrepreneurs create new businesses, assisted 8 businesses expand, helped create 91 jobs and retain 63 jobs, leveraged \$692,300 in owner investment to \$3,953,000 of loans/equity investment.

# CARBONDALE COMMUNITY PROFILE



## Highway Mileage

Carbondale to:

Atlanta	447
Chicago	331
Cincinnati	332
Dallas	648
Detroit	551
Denver	972
Indianapolis	264
Kansas City	356
Los Angeles	1,919
Memphis	213
Milwaukee	423
Minneapolis	662
Nashville	200
New Orleans	608
New York	1,007
Orlando	884
Seattle	2,200
Savannah	694
St. Louis	103
Washington DC	820

## HEALTH CARE

**Memorial Hospital of Carbondale** - Memorial Hospital of Carbondale is the flagship hospital for SIH and regional referral center for the 16 county southern Illinois region. Memorial paves the way to bring big city medicine home. Physicians in over 45 different specialties practice here, bringing expertise and new procedures, but successfully tailoring them to the particular needs of a rural setting.

- 154-bed tertiary care hospital
- Southern Illinois' largest and most spacious birthing center with Level II Plus Special Care Nursery
- Only dedicated pediatric unit in the region
- The core hospital for SIH's comprehensive, regional heart program, Prairie Heart Institute.
- High level surgical capabilities including daVinci technology
- Affiliated with SIU School of Medicine through its Family Practice Residency Program
- Neuroscience program including neurosurgery and the region's only Primary Stroke Center
- Accredited by the Commission on Cancer for comprehensive cancer treatment

## CARBONDALE COMMUNITY PROFILE

Educational Facilities	Number	Teachers	Enrollment	Grades
<i>Carbondale District #95 comprised of:</i>				
Carbondale Middle School	1	-	442	6-8
Lewis School	1	-	298	4-5
Thomas Elementary School	1	-	334	2-3
Parrish Elementary School	1	-	494	Pre-K-1
Total for District #95		149	1,568	
Carbondale Community High School District #165	1	77	1,025	9-12
<i>Outlying Districts which feed into CCHS:</i>				
Unity Point School	1	55	650	K-8
Giant City School	1	16	198	K-8
DeSoto Grade School	1	17	235	K-8
<i>Boarding/Religious/Private Schools</i>				
Brehm Preparatory School	1	35	103	Ages 11-12
Trinity Christian School	1	N/A	144	K-12
Carbondale New School	1	7	35	Pre-K-8
<i>Collegiate Level:</i>				
John A. Logan College	1	121	6,655	2-Year/Continuing Education
Southern Illinois University-Carbondale	1	1,316	13,346	BA/MA/PHD
Southern Illinois Collegiate Common Market (SICCM)	1	35	94	2-Year/ Licensed Certificate

**Southern Illinois University Carbondale** is a doctoral research university that offers more than 200 undergraduate, 70 Master's and 31 doctoral programs. It is rated 27<sup>th</sup> among the nation's 50 most entrepreneurial research universities. The Carnegie Foundation for the Advancement of Teaching classifies SIUC as a Research University: High Research Activity. The National Science Foundation ranks SIUC #101 among public universities in the U.S. for total research and development expenditures, and #142 among all U.S. universities. This places SIUC among the top 5 percent of U.S. higher education institutions for research. The University's Bachelor of Science degree program in fermentation science is one of only a handful in the nation and the only one in Illinois.

### **SIU-C Points of Pride:**

- Ranked top 5% of all U.S. higher education institutions for research
- Selected in the top one-third of the nation's top research universities in the inaugural Wall Street Journal/Higher Education college ranking
- Named by Victory Media as a "Military Friendly School" in 2018 for 9 consecutive years
- Named in Military Times magazine for being "Best for Vets: Colleges "2018" for four-year universities for 7 consecutive years
- Designated as a Tree Campus USA from the Arbor Day Foundation in 2016 and 2017
- Ranked #43 in game design by Princeton Review: 2017
- Ranked #72 in 2018 Best Education Schools ranking by US News and World Report

## CARBONDALE COMMUNITY PROFILE

Being a great place to live means being a great place to work. A thriving economy helps the tax base, which in turn helps a city attract and retain talent. Carbondale's economy, led by Southern Illinois University and followed by the healthcare industry, accounts for a large percentage of the jobs in Carbondale. Other top employment sectors include retail, education, construction, grocery, corporate, manufacturing and government.

Major Area Employers	Product/Service	Employees
Southern Illinois University	Higher Education/Research	5,779
Memorial Hospital of Carbondale	Medical	1,274
SIH System Offices	Medical/Business	627
SIH Medical Group	Medical	511
Carbondale School Employees (K-12)	Education/Service	403
Neuro Restorative	Head Injury Rehabilitation	400
Walmart Supercenter	Retail/Food	324
Illinois Department of Transportation	Highway Regional Office	291
City of Carbondale	Local Municipality	261
Com-Pac, Inc.	Medical/Specialty Plastic Bags Manufacturing	240
Lowe's	Retail	176
Brehm Preparatory School	Education – Special Needs	167
University Mall (Corporate & Tenants)	Retail/Food	160
Kroger	Grocery	160
Center for Medical Arts	Medical Clinic	124
Schnucks	Grocery	108
E.T. Simonds	Concrete/Construction	100
U.S. Postal Service	Government	62
Southern Illinoisan	Regional Newspaper Publishing	51
Centerstone	Medical Rehabilitation	50

### **RETAIL SHOPPING**

- University Mall with anchors: J.C. Penny, Macy's, Ulta, Bed Bath and Beyond and AMC Theatre
- Murdale Shopping Center with anchors: Neighborhood Food Co-op and Tru-Value
- University Place with anchors: Dick's Sporting Goods, Best Buy, Petco, AMC Theatre, TJ Maxx, and Party City
- Eastgate Shopping Center with anchor Ashley Furniture
- West Park Plaza with anchors: Gold's Gym and Sherwin Williams Paint
- Central Business District

**EATING ESTABLISHMENTS:** 130 dining options ranging from upscale to fast food

### **AWARDS**

- Named "Tree City USA," since 1981; Received Tree City USA Growth Award, 2015, 2016, 2017
- Winner, "GFOA Distinguished Budget Presentation Award," since 1986
- Winner, Bronze level for Bicycle Friendly Business, 2017, 2018
- Winner, Bronze level for Bicycle Friendly Community, 2016, 2017
- Ranked #4, "40 Best Commuter Cities in Illinois", 2015
- Transparency in Government Award, 2010, 2011, 2012, 2013, 2014
- Ameren Progressive City Award, 2012
- Winner, "Governor's Hometown Award," 1991, 1992, 2009
- All-America City Finalist, 2009
- City Livability Award, 2009
- Finalist, Award for Municipal Excellence, 2009
- Selected as "Best Small City in Illinois," 1990, 1997

## CARBONDALE COMMUNITY PROFILE

### Facilities

8	Banks
5	Local Radio Stations
230+	Cable TV channels
900	Seating cap. of largest banquet rooms
9	Hotel/Motels w/100 or less rooms each
2	Taxi companies
2	Movie theaters
8,450	Total number of rental units
17	Trailer parks

### Development Sources

City of Carbondale Economic Development  
Jackson County Growth Alliance  
Southern Illinois Research Business Incubator  
Carbondale Chamber of Commerce  
Carbondale Main Street  
Carbondale Tourism

### Newspapers

Southern Illinoisan (Daily)  
Carbondale Times (Weekly)  
Daily Egyptian (SIU Daily)

### Libraries, Museums and Arts

Carbondale Public Library  
Southern Illinois University Morris Library  
African American Museum  
Science Center  
SIU University Museum  
Stage Company  
McLeod Theatre  
Shryock Auditorium

### Recreational Facilities

8	Public golf courses (within 15 miles)
3	Public tennis courts
2	Country clubs
2	Recreation center/park districts
7	Public parks
1	State Park (Giant City State Park)
1	SIU-C Touch of Nature Environ. & Res. Center
1	National forest (Shawnee National Forest)
2	Wildlife Ref. (Crab Orchard & Touch of Nature)
2	Reservoirs (Evergreen Terrace & Cedar Lake)
2	Public swimming pools
1	Outdoor spray park
1	Outdoor splash park
1	Shawnee Wine Trail (11 wineries)

Public access to lakes and rivers for swimming, water skiing, fishing and boating

### Transportation

#### *Rail Service – Freight*

Canadian National – New Orleans, Memphis, Chicago, Canada  
Carbondale maintains a railroad car maintenance facility  
Nearest piggyback is 10 miles  
Frequency of switching is “as needed”

#### *Rail Service – Passenger*

Amtrak City of New Orleans – Chicago, Champaign, Carbondale, Memphis, New Orleans  
Amtrak Illini – Chicago, Champaign, Carbondale  
Amtrak Saluki – Chicago, Champaign, Carbondale

#### *Air Service*

Southern Illinois Airport  
Williamson County Airport

#### *Motor Carrier*

West Bus Service (Charters)  
Distance to nearest interstate interchange: 12 miles  
Number of local terminals: 2  
Number of carriers: 2  
(Includes intra and interstate carriers)

#### *Highways*

Highways serving community:  
- U.S. Route 51 and Illinois Route 13  
Interstates serving community:  
- I-57, I-24, I-64  
Nearest Interchange: 12 miles

**Carbondale Cedar Lake**, created in 1974 to supply tap water to the residents of Carbondale, now provides fishing, swimming and active recreation purposes.

## CARBONDALE COMMUNITY PROFILE



*Carbondale was named by Outdoor Life magazine as one of the top 200 towns for sportsmen and is home to one of Southern Illinois' most beautiful recreational facilities --- Cedar Lake.*

Carbondale is proud to border the **Shawnee National Forest**, which encompasses more than 270,000 acres in Southern Illinois and is home to outstanding natural areas that offer numerous outdoor experiences. Bordered on the east and west by the Ohio and Mississippi Rivers, the Shawnee National Forest flourishes with vegetation, wildlife and recreational opportunities.

In the summer of 1995, the owners of the first three wineries in Southern Illinois recognized that their wineries had untapped tourism potential. With this in mind and a lot of work, the Shawnee Hills Wine Trail was born as the first wine trail in Illinois. In 2015, **Shawnee Hills Wine Trail** marked its 20<sup>th</sup> anniversary. The Trail continues to expand and is no longer easy to travel in one day. Many Bed & Breakfasts have opened in the area with solid bookings throughout the year. The Shawnee Hills Wine Trail looks forward to increasing growth and success in the years to come, and is especially proud of the new American Viticultural Area (AVA) designation. This is a very exciting time for wine in the Shawnee Hills of Southern Illinois.

**Crab Orchard National Wildlife Refuge's** 44,000 acres of land and water contain a wide diversity of flora and fauna. Major habitat types on the refuge include hardwood forest, agricultural land, grazing units, brush land, wetlands, and lakes. The refuge provides significant resting areas for migratory birds utilizing the Mississippi Flyway. Wintering numbers of Canada Geese can peak at 200,000. A total of 700 plant species, 245 bird species, 33 mammal species, 63 fish species, and 44 reptile and amphibian species have been documented on the refuge. The western 24,000 acres of the refuge provide a wide range of recreational opportunities, including a 4,050-acre wilderness area. The eastern 20,000 acres is a wildlife sanctuary and public use is limited.

Southern Illinois University **Student Recreation Center** offers swimming and sports facilities, intramurals, sport clubs, group fitness programs, outdoor equipment rental and much more for students and members. The Student Recreation Center can also accommodate meetings and events.

Southern Illinois University's **Touch of Nature Environmental Center** is an outdoor education and recreation center serving SIU, the region and the nation with an outdoor laboratory for experiential learning, a field site for research, and a provider of therapeutic recreation, environmental education, adventure education, personal and interpersonal growth experiences and facilities services.

The **Carbondale Park District** offers a wide variety of programs to fit the needs of the community. The Park District serves a diverse population with a wide range of interests. The District's programs and services serve infants, preschoolers, youths, teens, adults and seniors, as well as family interests. The Park District offers special events, instructional lessons, free programs and leisure services.

## CARBONDALE COMMUNITY PROFILE

### **Carbondale Achievements for Fiscal Year 2018...**

CARBONDALE — WalletHub, the personal-finance website, recently conducted an in-depth analysis of 2018's best small cities in which to start a business, and because of Carbondale's access to resources, we ranked 62<sup>nd</sup> overall, according to a news release from the website.

The survey, conducted in advance of this year's National Small Business Week (April 29-May 5), analyzed more than 1,200 small-sized cities nationwide, across 18 key metrics, to determine their business environment, access to resources and business costs.

While every small city offers advantages and disadvantages to entrepreneurs, lower labor costs and access to financing can make a huge impact on the growth of a new business, according to WalletHub.