

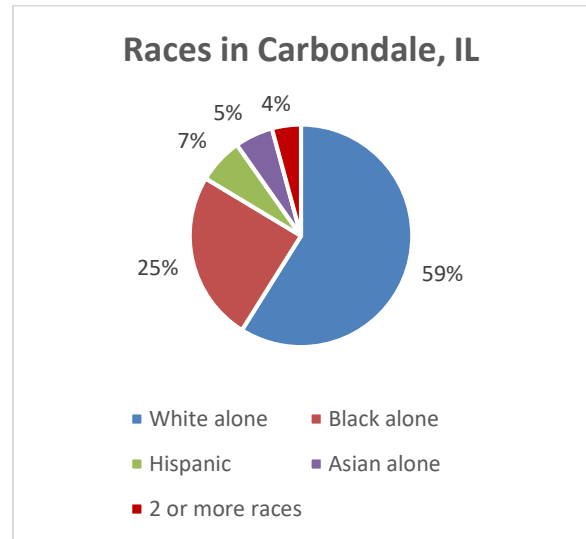
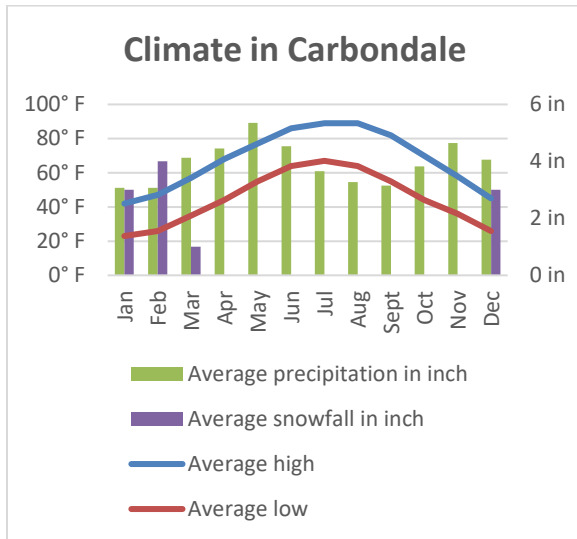
CARBONDALE COMMUNITY PROFILE

Carbondale is the trade, tourism and educational center of Southern Illinois. Area transportation includes bus, rail and air. Bordered by a national forest, national wildlife refuge, state park and home of Southern Illinois University, the community serves as the host and focal point for many of the region's business and recreation activities.

Platted November 27, 1852
Incorporated August 23, 1873
Council / Manager form of government
Home Rule municipality
Area in square miles 17.70
Number of full time equivalent employees 255.86

	Population			Races		
	City	County	State		City of Carbondale	State of Illinois
1970	22,816	55,008	11,110,285	White alone	61.5%	77.1%
1980	26,414	61,522	11,428,518	Black alone	25.8%	14.6%
1990	27,033	61,067	11,430,602	Hispanic	6.9%	17.3%
2000	20,681	59,612	12,419,293	Asian alone	5.8%	5.7%
2010	25,902	60,218	12,830,632	2 or more races	4.4%	2.0%
2019*	25,376	57,419	12,741,080			

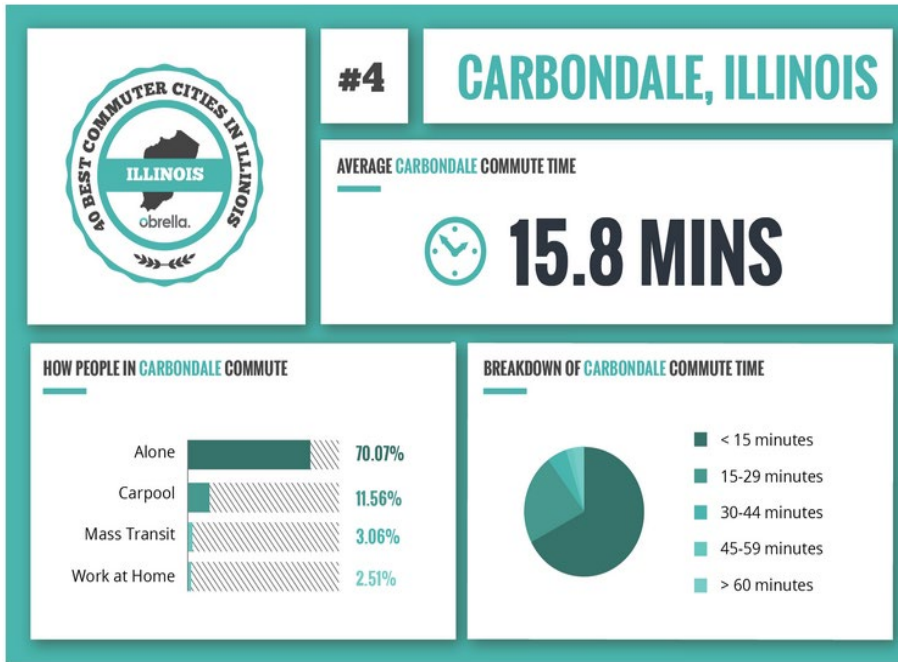
*U.S. Census Bureau Annual Estimate



The Jackson County-Murphysboro-Carbondale Enterprise Zone (EZ) was a driving force for economic development during FY 2019, the enterprise zone ISSUED certificates for 16 projects with a total construction value of \$11,084,494.

The Carbondale Small Business Development Center at SIU: Last year (2018) advised 287 clients, provided 1,380 hours of consulting, held 22 business management training sessions, helped 25 entrepreneurs create new businesses, assisted 12 businesses expand, helped create 80 jobs and retain 114 jobs, leveraged \$1,523,095 in owner investment to \$3,950,305 of loans/equity investment.

CARBONDALE COMMUNITY PROFILE



Highway Mileage

Carbondale to:

Atlanta	447
Chicago	331
Cincinnati	332
Dallas	648
Detroit	551
Denver	972
Indianapolis	264
Kansas City	356
Los Angeles	1,919
Memphis	213
Milwaukee	423
Minneapolis	662
Nashville	200
New Orleans	608
New York	1,007
Orlando	884
Seattle	2,200
Savannah	694
St. Louis	103
Washington DC	820

HEALTH CARE

Memorial Hospital of Carbondale - Memorial Hospital of Carbondale is the flagship hospital for SIH and regional referral center for the 16 county southern Illinois region. Memorial paves the way to bring big city medicine home. Physicians in over 45 different specialties practice here, bringing expertise and new procedures, but successfully tailoring them to the particular needs of a rural setting.

- 154-bed tertiary care hospital
- Southern Illinois' largest and most spacious birthing center with Level II Plus Special Care Nursery
- Only dedicated pediatric unit in the region
- The core hospital for SIH's comprehensive, regional heart program, Prairie Heart Institute.
- High level surgical capabilities including daVinci technology
- Affiliated with SIU School of Medicine through its Family Practice Residency Program
- Neuroscience program including neurosurgery and a designated Primary Stroke Center
- Accredited by the Commission on Cancer for comprehensive cancer treatment

CARBONDALE COMMUNITY PROFILE

Educational Facilities	Number	Teachers	Enrollment	Grades
<i>Carbondale District #95 comprised of:</i>				
Carbondale Middle School	1	-	406	6-8
Lewis School	1	-	321	4-5
Thomas Elementary School	1	-	321	2-3
Parrish Elementary School	1	-	473	Pre-K-1
Total for District #95		135	1,521	
Carbondale Community High School District #165	1	75	1,013	9-12
<i>Outlying Districts which feed into CCHS:</i>				
Unity Point School	1	60	651	K-8
Giant City School	1	35	208	K-8
DeSoto Grade School	1	19	187	K-8
<i>Boarding/Religious/Private Schools</i>				
Brehm Preparatory School	1	19	98	Ages 11-12
Trinity Christian School	1	N/A	131	K-12
Carbondale New School	1	6	40	Pre-K-8
<i>Collegiate Level:</i>				
John A. Logan College	1	254	5,092	2-Year/Continuing Education
Southern Illinois University-Carbondale	1	1,080	12,817	BA/MA/PHD

Southern Illinois University Carbondale is a doctoral research university that offers more than 200 undergraduate, 80 Master’s and 30 doctoral programs. The Carnegie Foundation for the Advancement of Teaching classifies SIUC as a Research University: High Research Activity. The National Science Foundation ranks SIUC #101 among public universities in the U.S. for total research and development expenditures, and #142 among all U.S. universities. This places SIUC among the top 5 percent of U.S. higher education institutions for research. The University’s Bachelor of Science degree program in fermentation science is one of only a handful in the nation and the only one in Illinois.

SIU-C Points of Pride:

- For a sixth straight year SIU earned a spot in The Princeton Review’s “Guide to 399 Green Colleges
- Ranked in the top 20 percent of Illinois colleges and universities offering online degree programs by Best Colleges.com
- Among the top 5 percent of all U.S. higher education institutions for research
- One of 54 colleges and universities to earn national recognition for its economic development work in the region from The Association of Public and Land-grant Universities
- Selected in the top one-third of the nation’s top research universities in the inaugural Wall Street Journal/Times Higher Education college ranking (No. 315 of 1,051)
- In each of the last three years, SIU has earned a spot in the Center for World Universities Rankings, which recognizes the top 2.5 percent of the world’s 25,000 institutions of higher learning
- Named by Victory Media as a “Military Friendly® School” in 2018 for a ninth consecutive year
- Was named in Military Times magazine for being “Best for Vets: Colleges 2018” for four-year universities for a seventh consecutive year

CARBONDALE COMMUNITY PROFILE

Being a great place to live means being a great place to work. A thriving economy helps the tax base, which in turn helps a city attract and retain talent. Carbondale's economy, led by Southern Illinois University and followed by the healthcare industry, accounts for a large percentage of the jobs in Carbondale. Other top employment sectors include retail, education, construction, grocery, corporate, manufacturing and government.

Major Area Employers	Product/Service	Employees
Southern Illinois University	Higher Education and Research	5,518
SIH/Carbondale Memorial Hospital	Regional Healthcare Provider	2,412
Neuro-Restorative	Head and Spain Cord Injury Rehab	510
Carbondale School Districts 95 and 165	Public Education	403
Wal-Mart Super Center	General Retail/Groceries/Automotive	324
Illinois Department of Transportation	Regional Office	291
City of Carbondale	Municipal Government	256
Com-Pac International, Inc.	Plastic Packaging Manufacturer	235
Lowes	Retail Home Improvement	176
Brehm Preparatory School	Private Education	167
Kroger	Retail Grocery	160
InterTape Polymer	Industrial Adhesive Manufacturer	150
Schnucks	Retail Grocery	108
E. T. Simonds	Construction	100
US Postal Service	Regional Sectioning Center	62
Lee Enterprises (Southern Illinoisan)	Regional Newspaper Publishing	51
IlliniCare Health	Managed Care Organization	50
Prairie Farms	Dairy Products	50

RETAIL SHOPPING

- University Mall with anchors: J.C. Penny, Macy's, Ulta, and Bed Bath and Beyond
- Murdale Shopping Center with anchors: Neighborhood Food Co-op and Tru-Value
- University Place with anchors: Dick's Sporting Goods, Best Buy, Petco, AMC Theatre, TJ Maxx, and Party City
- Eastgate Shopping Center with anchor Ashley Furniture
- West Park Plaza with anchor Gold's Gym
- Central Business District

EATING ESTABLISHMENTS: 140 dining options ranging from upscale to fast food

AWARDS

- IDHR Human Rights Day Award, 2018
- Named "Tree City USA," since 1981; Received Tree City USA Growth Award, 2015, 2016, 2017, 2018
- Winner, "GFOA Distinguished Budget Presentation Award," since 1986
- Winner, Bronze level for Bicycle Friendly Business, 2017, 2018
- Winner, Bronze level for Bicycle Friendly Community, 2016, 2017
- Ranked #4, "40 Best Commuter Cities in Illinois", 2015
- Transparency in Government Award, 2010, 2011, 2012, 2013, 2014
- Ameren Progressive City Award, 2012
- Winner, "Governor's Hometown Award," 1991, 1992, 2009
- All-America City Finalist, 2009
- City Livability Award, 2009
- Finalist, Award for Municipal Excellence, 2009
- Selected as "Best Small City in Illinois," 1990, 1997

CARBONDALE COMMUNITY PROFILE

Facilities

8	Banks
7	Local Radio Stations
230+	Cable TV channels
900	Seating cap. of largest banquet rooms
9	Hotel/Motels w/100 or less rooms each
2	Taxi/Uber
1	Movie theater
8,276	Total number of rental units
17	Trailer parks

Development Sources

City of Carbondale Economic Development
Jackson County Growth Alliance
Southern Illinois Research Business Incubator
Carbondale Chamber of Commerce
Carbondale Main Street
Carbondale Tourism

Newspapers

Southern Illinoisan (Daily)
Carbondale Times (Weekly)
Daily Egyptian (SIU Daily)

Libraries, Museums and Arts

Carbondale Public Library
Southern Illinois University Morris Library
African American Museum
Science Center
SIU University Museum
Stage Company
McLeod Theatre
Shryock Auditorium
R. Buckminster Fuller Dome Home

Recreational Facilities

4	Public golf courses (within 7 miles)
2	Public tennis courts
2	Country clubs
2	Recreation center/park districts
7	Public parks
1	State Park (Giant City State Park)
1	SIU-C Touch of Nature Environ. & Res. Center
1	National forest (Shawnee National Forest)
2	Wildlife Ref. (Crab Orchard & Touch of Nature)
2	Reservoirs (Evergreen Terrace & Cedar Lake)
2	Public swimming pools
1	Outdoor spray park
1	Outdoor splash park
1	Shawnee Wine Trail (11 wineries)

Public access to lakes and rivers for swimming, water skiing, fishing and boating

Transportation

Rail Service – Freight

Canadian National – New Orleans, Memphis, Chicago, Canada
Carbondale maintains a railroad car maintenance facility
Nearest piggyback is 10 miles
Frequency of switching is “as needed”

Rail Service – Passenger

Amtrak City of New Orleans – Chicago, Champaign, Carbondale, Memphis, New Orleans
Amtrak Illini – Chicago, Champaign, Carbondale
Amtrak Saluki – Chicago, Champaign, Carbondale

Air Service

Southern Illinois Airport
Williamson County Airport

Motor Carrier

West Bus Service (Charters)
Distance to nearest interstate interchange: 12 miles
Number of local terminals: 2
Number of carriers: 2
(Includes intra and interstate carriers)

Highways

Highways serving community:
- U.S. Route 51 and Illinois Route 13
Interstates serving community:
- I-57, I-24, I-64
Nearest Interchange: 12 miles

CARBONDALE COMMUNITY PROFILE

Carbondale Cedar Lake, created in 1974 to supply tap water to the residents of Carbondale, now provides fishing, swimming and active recreation purposes.



Carbondale was named by Outdoor Life magazine as one of the top 200 towns for sportsmen and is home to one of Southern Illinois' most beautiful recreational facilities --- Cedar Lake.

Carbondale is proud to border the **Shawnee National Forest**, which encompasses more than 270,000 acres in Southern Illinois and is home to outstanding natural areas that offer numerous outdoor experiences. Bordered on the east and west by the Ohio and Mississippi Rivers, the Shawnee National Forest flourishes with vegetation, wildlife and recreational opportunities.

In the summer of 1995, the owners of the first three wineries in Southern Illinois recognized that their wineries had untapped tourism potential. With this in mind and a lot of work, the Shawnee Hills Wine Trail was born as the first wine trail in Illinois. In 2015, **Shawnee Hills Wine Trail** marked its 20th anniversary. The Trail continues to expand and is no longer easy to travel in one day. Many Bed & Breakfasts have opened in the area with solid bookings throughout the year. The Shawnee Hills Wine Trail looks forward to increasing growth and success in the years to come, and is especially proud of the new American Viticultural Area (AVA) designation. This is a very exciting time for wine in the Shawnee Hills of Southern Illinois.

Crab Orchard National Wildlife Refuge's 44,000 acres of land and water contain a wide diversity of flora and fauna. Major habitat types on the refuge include hardwood forest, agricultural land, grazing units, brush land, wetlands, and lakes. The refuge provides significant resting areas for migratory birds utilizing the Mississippi Flyway. Wintering numbers of Canada Geese can peak at 200,000. A total of 700 plant species, 245 bird species, 33 mammal species, 63 fish species, and 44 reptile and amphibian species have been documented on the refuge. The western 24,000 acres of the refuge provide a wide range of recreational opportunities, including a 4,050-acre wilderness area. The eastern 20,000 acres is a wildlife sanctuary and public use is limited.

Southern Illinois University **Student Recreation Center** offers swimming and sports facilities, intramurals, sport clubs, group fitness programs, outdoor equipment rental and much more for students and members. The Student Recreation Center can also accommodate meetings and events.

Southern Illinois University's **Touch of Nature Environmental Center** is an outdoor education and recreation center serving SIU, the region and the nation with an outdoor laboratory for experiential learning, a field site for research, and a provider of therapeutic recreation, environmental education, adventure education, personal and interpersonal growth experiences and facilities services.

The **Carbondale Park District** offers a wide variety of programs to fit the needs of the community. The Park District serves a diverse population with a wide range of interests. The District's programs and services serve infants, preschoolers, youths, teens, adults and seniors, as well as family interests. The Park District offers special events, instructional lessons, free programs and leisure services.

CARBONDALE COMMUNITY PROFILE

Carbondale Achievements for Fiscal Year 2019...

CARBONDALE — WalletHub, a personal-finance website, recently conducted an in-depth analysis of the “Best Small Cities to Start a Business” and published its findings. WalletHub stated “To determine the best small cities to start a business, we compared the business-friendliness of more than 1,200 small-sized cities. Our data set of 18 key metrics ranges from average growth in number of small businesses to investor access to labor costs.”

Carbondale ranked as follows:

1 (tied with 5 other cities) - Highest Average Growth in Number of Small Businesses

2 - Low Labor Costs

3 - Most Accessible Financing

12 - Overall

27 - Access to Resources